

SOLENOID VALVE

Electroválvulas
Magnetventile
Électrovalve

NG10 Solenoid valve - spool S1



Electroválvula NG10- corredera S1
Magnetventil NG10 - Spule S1
Electro. NG10- tiroir S1



Part n° Referencia	SIZE TAMAÑO	VOLTAGE (V) VOLTAJE (V)	MAX. FLOW (l/min) CAUDAL MÁX. (l/min)	MAX. PRESSURE (bar) PRESIÓN MÁX. (bar)	€
DS5-S1/11N-A110-50K1	NG-10	110 VAC	120	320	526,15
DS5-S1/11N-A230-50K1	NG-10	220 VAC	120	320	*
DS5-S1/11N-A24-50K1	NG-10	24 VAC	120	320	526,15
DS5-S1/11N-A48-50K1	NG-10	48 VAC	120	320	562,25
DS5-S1/11N-D12K1	NG-10	12 VDC	120	320	526,15
DS5-S1/11N-D24K1	NG-10	24 VDC	120	320	526,15
DS5-S1/11N-D48K1	NG-10	48 VDC	120	320	562,25

NG10 Solenoid valve - spool S2



Electroválvula NG10- corredera S2
Magnetventil NG10 - Spule S2
Electro. NG10- tiroir S2



Part n° Referencia	SIZE TAMAÑO	VOLTAGE (V) VOLTAJE (V)	MAX. FLOW (l/min) CAUDAL MÁX. (l/min)	MAX. PRESSURE (bar) PRESIÓN MÁX. (bar)	€
DS5-S2/11N-A110-50K1	NG-10	110 VAC	120*	320	526,15
DS5-S2/11N-A230-50K1	NG-10	220 VAC	120*	320	526,15
DS5-S2/11N-A24-50K1	NG-10	24 VAC	120*	320	526,15
DS5-S2/11N-A48-50K1	NG-10	48 VAC	120*	320	605,07
DS5-S2/11N-D12K1	NG-10	12 VDC	120*	320	526,15
DS5-S2/11N-D24K1	NG-10	24 VDC	120*	320	571,59
DS5-S2/11N-D48K1	NG-10	48 VDC	120*	320	565,03

Working range on technical data sheet / Ver gráficos en documentación técnica / Bitte vergleichen Sie die Grafiken in der technischen Dokumentation / Plage de travail dans la fiche technique

NG10 Solenoid valve - spool S3



Electroválvula NG10- corredera S3
Magnetventil NG10 - Spule S3
Electro. NG10- tiroir S3



Part n° Referencia	SIZE TAMAÑO	VOLTAGE (V) VOLTAJE (V)	MAX. FLOW (l/min) CAUDAL MÁX. (l/min)	MAX. PRESSURE (bar) PRESIÓN MÁX. (bar)	€
DS5-S3/11N-A110-50K1	NG-10	110 VAC	120	320	619,45
DS5-S3/11N-A230-50K1	NG-10	220 VAC	120	320	630,73
DS5-S3/11N-A24-50K1	NG-10	24 VAC	120	320	619,45
DS5-S3/11N-A48-50K1	NG-10	48 VAC	120	320	661,62
DS5-S3/11N-D12K1	NG-10	12 VDC	120	320	526,15
DS5-S3/11N-D24K1	NG-10	24 VDC	120	320	526,15
DS5-S3/11N-D48K1	NG-10	48 VDC	120	320	565,03

NG10 Solenoid valve - spool S4



Electroválvula NG10- corredera S4
Magnetventil NG10 - Spule S4
Electro. NG10- tiroir S4



Part n° Referencia	SIZE TAMAÑO	VOLTAGE (V) VOLTAJE (V)	MAX. FLOW (l/min) CAUDAL MÁX. (l/min)	MAX. PRESSURE (bar) PRESIÓN MÁX. (bar)	€
DS5-S4/11N-A110-50K1	NG-10	110 VAC	120*	320	588,63
DS5-S4/11N-A230-50K1	NG-10	220 VAC	120*	320	588,63
DS5-S4/11N-A48-50K1	NG-10	48 VAC	120*	320	624,72
DS5-S4/11N-D12K1	NG-10	12 VDC	120*	320	588,63
DS5-S4/11N-D24K1	NG-10	24 VDC	120*	320	676,93
DS5-S4/11N-D48K1	NG-10	48 VDC	120*	320	633,53

Working range on technical data sheet / Ver gráficos en documentación técnica / Bitte vergleichen Sie die Grafiken in der technischen Dokumentation / Plage de travail dans la fiche technique

SOLENOID VALVE

Electroválvulas
Magnetventile
Électrovalve

NG10 Solenoid valve - spool TA



Electroválvula NG10- corredera TA
Magnetventil NG10 - Spule TA
Electro. NG10- tiroir TA



Part n° Referencia	SIZE TAMANO	VOLTAGE (V) VOLTAJE (V)	MAX. FLOW (l/min) CAUDAL MAX. (l/min)	MAX. PRESSURE (bar) PRESION MAX. (bar)	€
DS5-TA/11N-A110-50K1	NG-10	110 VAC	120	320	385,94
DS5-TA/11N-A230-50K1	NG-10	220 VAC	120	320	385,94
DS5-TA/11N-A24-50K1	NG-10	24 VAC	120	320	385,94
DS5-TA/11N-A48-50K1	NG-10	48 VAC	120	320	403,99
DS5-TA/11N-D12K1	NG-10	12 VDC	120	320	385,94
DS5-TA/11N-D24K1	NG-10	24 VDC	120	320	385,94
DS5-TA/11N-D48K1	NG-10	48 VDC	120	320	403,99

NG10 Solenoid valve - spool SA2



Electroválvula NG10- corredera SA2
Magnetventil NG10 - Spule SA2
Electro. NG10- tiroir SA2



Part n° Referencia	SIZE TAMANO	VOLTAGE (V) VOLTAJE (V)	MAX. FLOW (l/min) CAUDAL MAX. (l/min)	MAX. PRESSURE (bar) PRESION MAX. (bar)	€
DS5-SA2/11N-A110-50K1	NG-10	110 VAC	120	320	385,94
DS5-SA2/11N-A230-50K1	NG-10	220 VAC	120	320	385,94
DS5-SA2/11N-A24-50K1	NG-10	24 VAC	120	320	385,94
DS5-SA2/11N-A48-50K1	NG-10	48 VAC	120	320	403,99
DS5-SA2/11N-D12K1	NG-10	12 VDC	120	320	385,94
DS5-SA2/11N-D24K1	NG-10	24 VDC	120	320	385,94
DS5-SA2/11N-D48K1	NG-10	48 VDC	120	320	403,99

NG10 Solenoid valve - spool TB



Electroválvula NG10- corredera TB
Magnetventil NG10 - Spule TB
Electro. NG10- tiroir TB

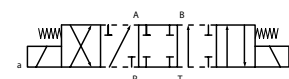


Part n° Referencia	SIZE TAMANO	VOLTAGE (V) VOLTAJE (V)	MAX. FLOW (l/min) CAUDAL MAX. (l/min)	MAX. PRESSURE (bar) PRESION MAX. (bar)	€
DS5-TB/11N-A110-50K1	NG-10	110 VAC	120	320	396,62
DS5-TB/11N-A230-50K1	NG-10	220 VAC	120	320	385,94
DS5-TB/11N-A24-50K1	NG-10	24 VAC	120	320	387,27
DS5-TB/11N-A48-50K1	NG-10	48 VAC	120	320	403,99
DS5-TB/11N-D12K1	NG-10	12 VDC	120	320	385,94
DS5-TB/11N-D24K1	NG-10	24 VDC	120	320	385,94
DS5-TB/11N-D48K1	NG-10	48 VDC	120	320	403,99

NG10 Compact solenoid valve -spool S1



Electroválvula NG10 compacta- corredera S1
Kompaktes Magnetventil NG10 - Spule S1
Electro. NG10 compacte-tiroir S1

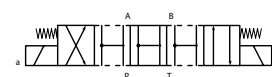


Part n° Referencia	SIZE TAMANO	VOLTAGE (V) VOLTAJE (V)	MAX. FLOW (l/min) CAUDAL MAX. (l/min)	MAX. PRESSURE (bar) PRESION MAX. (bar)	€
DL5B-S1/10N-D12K1	NG-10	12 VDC	125	320	395,52
DL5B-S1/10N-D24K1	NG-10	24 VDC	125	320	395,52

NG10 Compact solenoid valve -spool S2



Electroválvula NG10 compacta- corredera S2
Kompaktes Magnetventil NG10 - Spule S2
Electro. NG10 compacte-tiroir S2



Part n° Referencia	SIZE TAMANO	VOLTAGE (V) VOLTAJE (V)	MAX. FLOW (l/min) CAUDAL MAX. (l/min)	MAX. PRESSURE (bar) PRESION MAX. (bar)	€
DL5B-S2/10N-D12K1	NG-10	12 VDC	125	320	395,52
DL5B-S2/10N-D24K1	NG-10	24 VDC	125	320	395,52

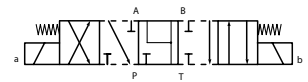
SOLENOID VALVE

Electroválvulas
Magnetventile
Électrovalve

NG10 Compact solenoid valve -spool S3



Electroválvula NG10 compacta- corredera S3
Kompaktes Magnetventil NG10 - Spule S3
Electro.NG10 compacte-tiroir S3

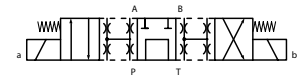


Part n° Referencia	SIZE TAMAÑO	VOLTAGE (V) VOLTAJE (V)	MAX. FLOW (l/min) CAUDAL MAX.(l/min)	MAX. PRESSURE (bar) PRESIÓN MAX. (bar)	€
DL5B-S3/10N-D12K1	NG-10	12 VDC	125	320	395,52
DL5B-S3/10N-D24K1	NG-10	24 VDC	125	320	395,52

NG10 Compact solenoid valve -spool S4



Electroválvula NG10 compacta- corredera S4
Kompaktes Magnetventil NG10 - Spule S4
Electro.NG10 compacte-tiroir S4

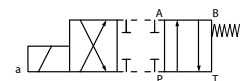


Part n° Referencia	SIZE TAMAÑO	VOLTAGE (V) VOLTAJE (V)	MAX. FLOW (l/min) CAUDAL MAX.(l/min)	MAX. PRESSURE (bar) PRESIÓN MAX. (bar)	€
DL5B-S4/10N-D12K1	NG-10	12 VDC	125	320	456,74
DL5B-S4/10N-D24K1	NG-10	24 VDC	125	320	456,74

NG10 Compact solenoid valve -spool TA



Electroválvula NG10 compacta- corredera TA
Kompaktes Magnetventil NG10 - Spule TA
Electro.NG10 compacte-tiroir TA



Part n° Referencia	SIZE TAMAÑO	VOLTAGE (V) VOLTAJE (V)	MAX. FLOW (l/min) CAUDAL MAX.(l/min)	MAX. PRESSURE (bar) PRESIÓN MAX. (bar)	€
DL5B-TA/10N-D12K1	NG-10	12 VDC	125	320	315,14
DL5B-TA/10N-D24K1	NG-10	24 VDC	125	320	315,14

NG10 Compact solenoid valve -spool SA2



Electroválvula NG10 compacta- corredera SA2
Kompaktes Magnetventil NG10 - Spule SA2
Electro.NG10 compacte-tiroir SA2

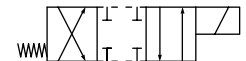


Part n° Referencia	SIZE TAMAÑO	VOLTAGE (V) VOLTAJE (V)	MAX. FLOW (l/min) CAUDAL MAX.(l/min)	MAX. PRESSURE (bar) PRESIÓN MAX. (bar)	€
DL5B-SA2/10N-D12K1	NG-10	12 VDC	125	320	315,14
DL5B-SA2/10N-D24K1	NG-10	24 VDC	125	320	315,14

NG10 Compact solenoid valve -spool TB



Electroválvula NG10 compacta- corredera TB
Kompaktes Magnetventil NG10 - Spule TB
Electro.NG10 compacte-tiroir TB



Part n° Referencia	SIZE TAMAÑO	VOLTAGE (V) VOLTAJE (V)	MAX. FLOW (l/min) CAUDAL MAX.(l/min)	MAX. PRESSURE (bar) PRESIÓN MAX. (bar)	€
DL5B-TB/10N-D12K1	NG-10	12 VDC	125	320	315,14
DL5B-TB/10N-D24K1	NG-10	24 VDC	125	320	315,14

DS5/11N solenoid (direct current)



Bobinas corriente continua para DS5/11N
Gleichstrom-Magnetspulen für DS5/11N
Bobines courant continu pour DS5/11N

Part n° Referencia	VOLTAGE (V) VOLTAJE (V)	POWER (W) POTENCIA (W)	€
C31-D12K1/20	12 VDC	32.7	77,67
C31-D24K1/20	24 VDC	31	82,81
C31-D48K1/20	48 VDC	29.5	96,74